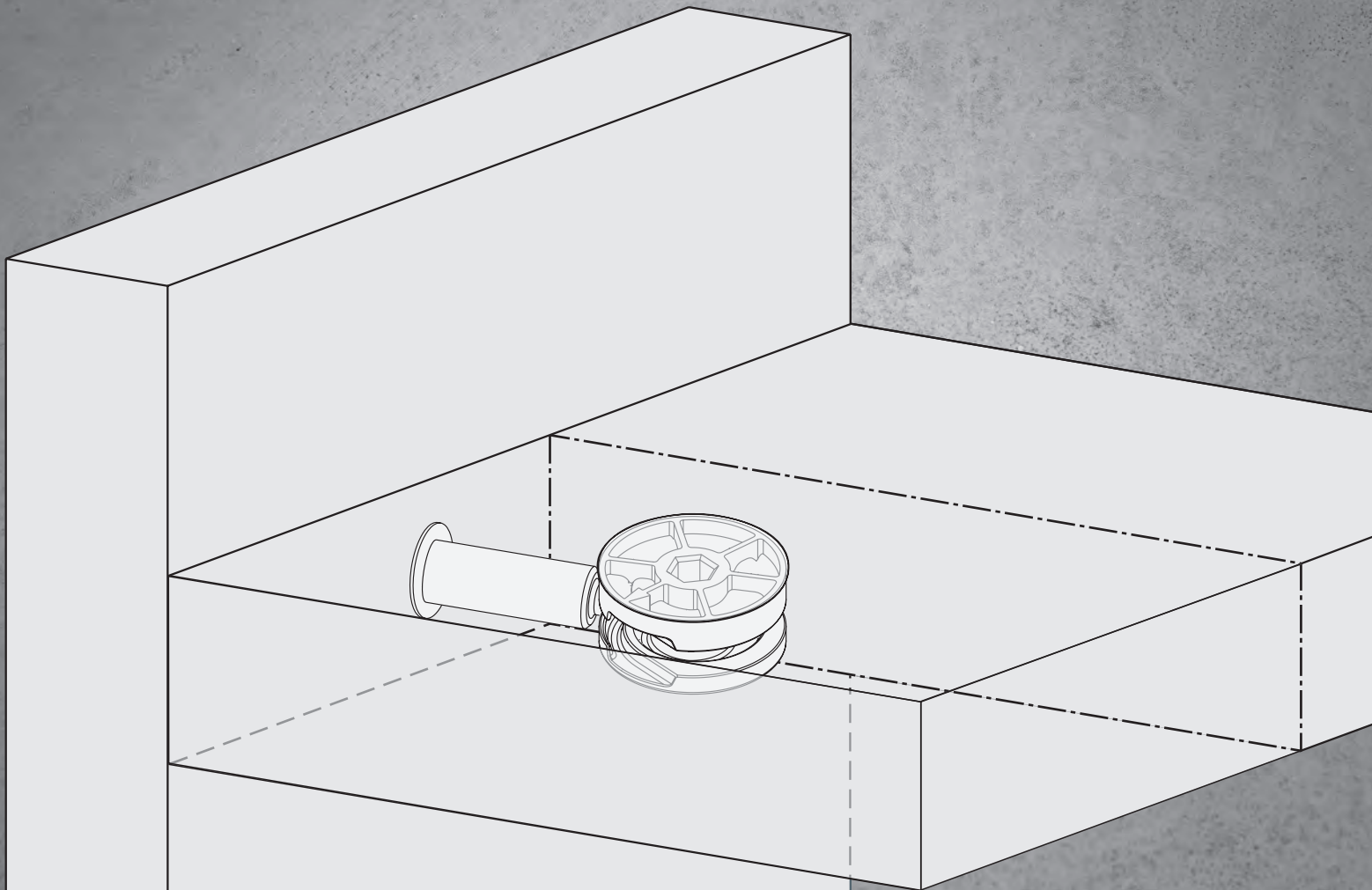



SPIRALEXZENTER CLOCK Ø25

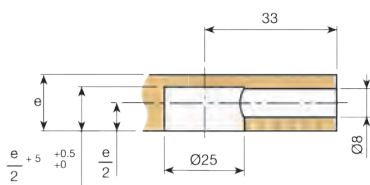
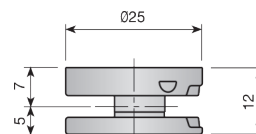
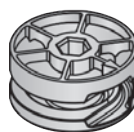
Lösung für grosse Belastungen mit minimalen Bohrungen. Der Ø25 Spiralexzenter clock vermeidet mögliche Lockerungen durch Vibration. Für Platten ab 15mm Stärke.




1 EXZENTER CLOCK UND ABDECKKAPPEN

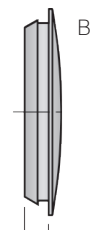
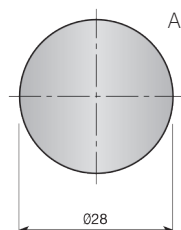
Spiralexzenter clock Ø25mm.

			
Vernickelt	511.525.066		
Verzinkt	511.525.033	500	



Abdeckkappe.

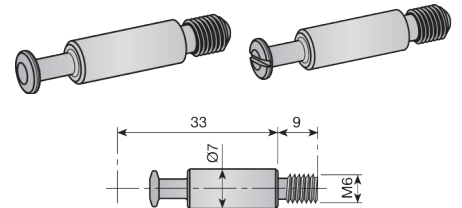
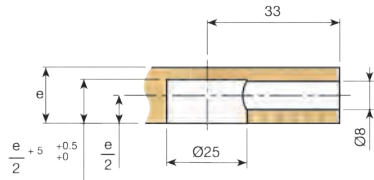
	Plattenstärke	Größen			
Vernickelt		A	530.225.065		
Weiß	RAL 9003	>20mm	B	530.400.006	1.000
Braun	RAL 8016	>20mm	B	530.400.010	oder
Schwarz	RAL 9005	>20mm	B	530.400.021	2.000
Vernickelt		>20mm	B	530.400.065	
Grau	RAL 7040	>20mm	B	530.400.312	




2 VERBINDUNGSBOLZEN

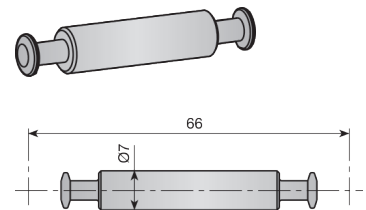
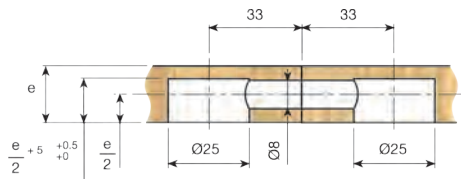
Verbindungsbolzen.

	Ohne Schlitz	Mit Schlitz	
Verzinkt	520.133.036	520.233.033	500 oder 1.000




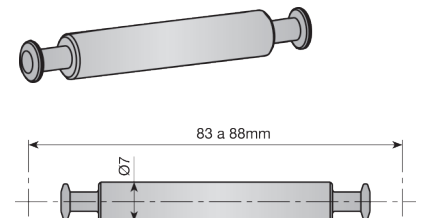
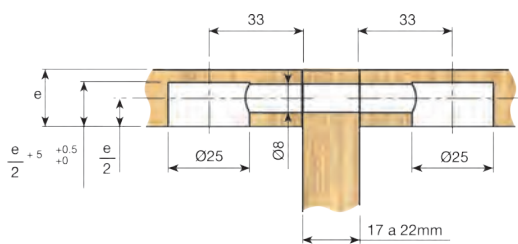
Doppelverbindungsbolzen.

Verzinkt	528.133.034	
----------	-------------	---




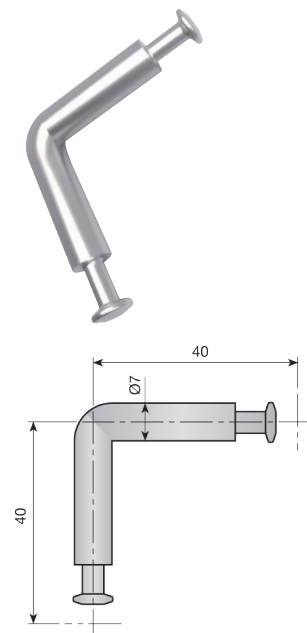
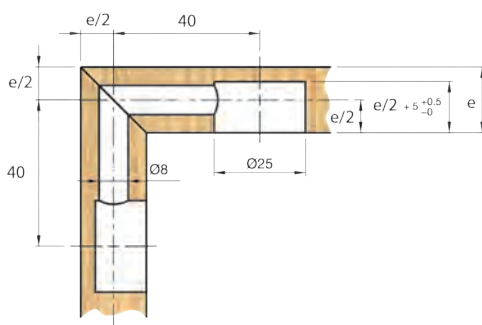
Doppelverbindungsbolzen für Mittelseiten.

Verzinkt	528.233.031	
----------	-------------	---

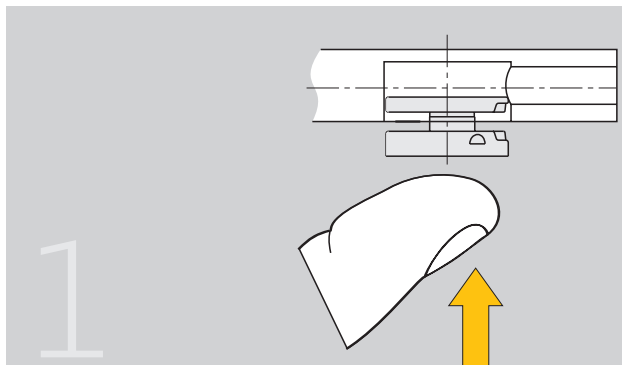


Doppelverbindungsbolzen 90°.

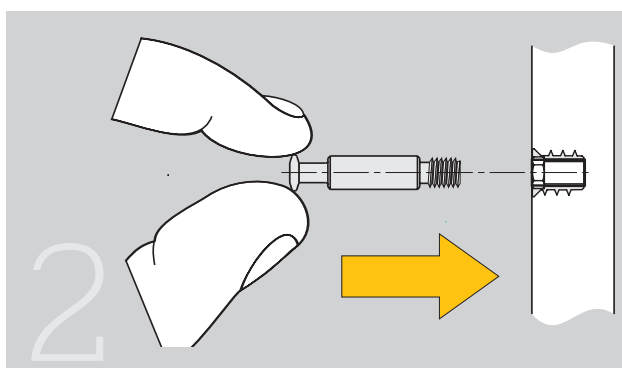
Verzinkt	528.333.035	
----------	-------------	---



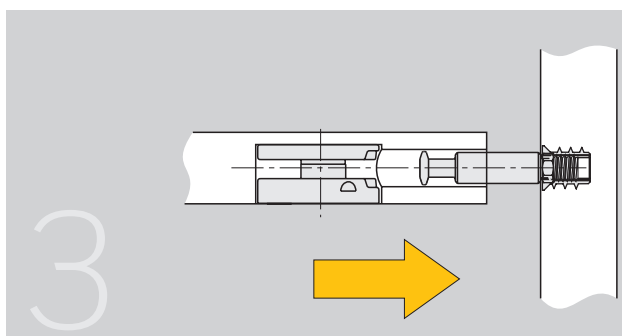
3 MONTAGE



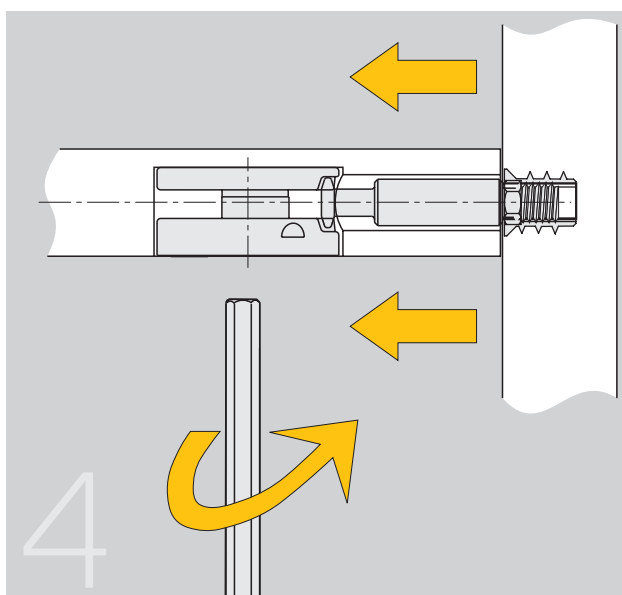
Den Spiralexzenter clock von Hand in das Loch in der Platte einsetzen.



Muffe in die Seitenplatte einsetzen und Verbindungsbolzen in die Muffe.



Spiralexzenter clock auf Höhe des Verbindungsbolzens bringen.



Beim Drehen des Exzenter clock wird der Bolzen bewegt, wodurch eine starke und effiziente Verbindung von Seitenwand und Platte erreicht wird.

Zum Abbauen der Platte, befolgen sie bitte die obigen Schritte in umgekehrter Reihenfolge.